



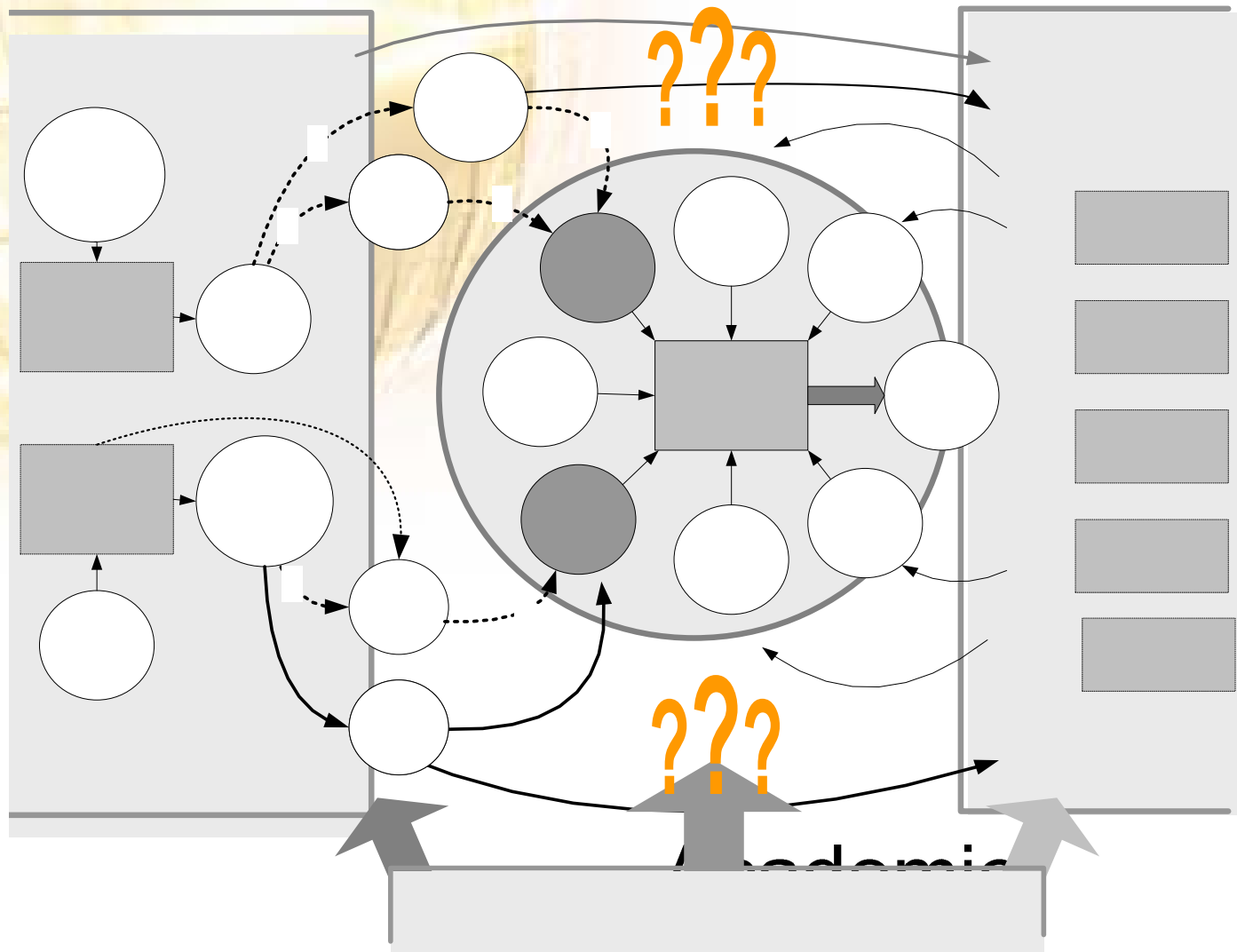
Country Report : Institute Technology Of Bandung

Dr. Suhono H. Supangkat
15 Februari 2006

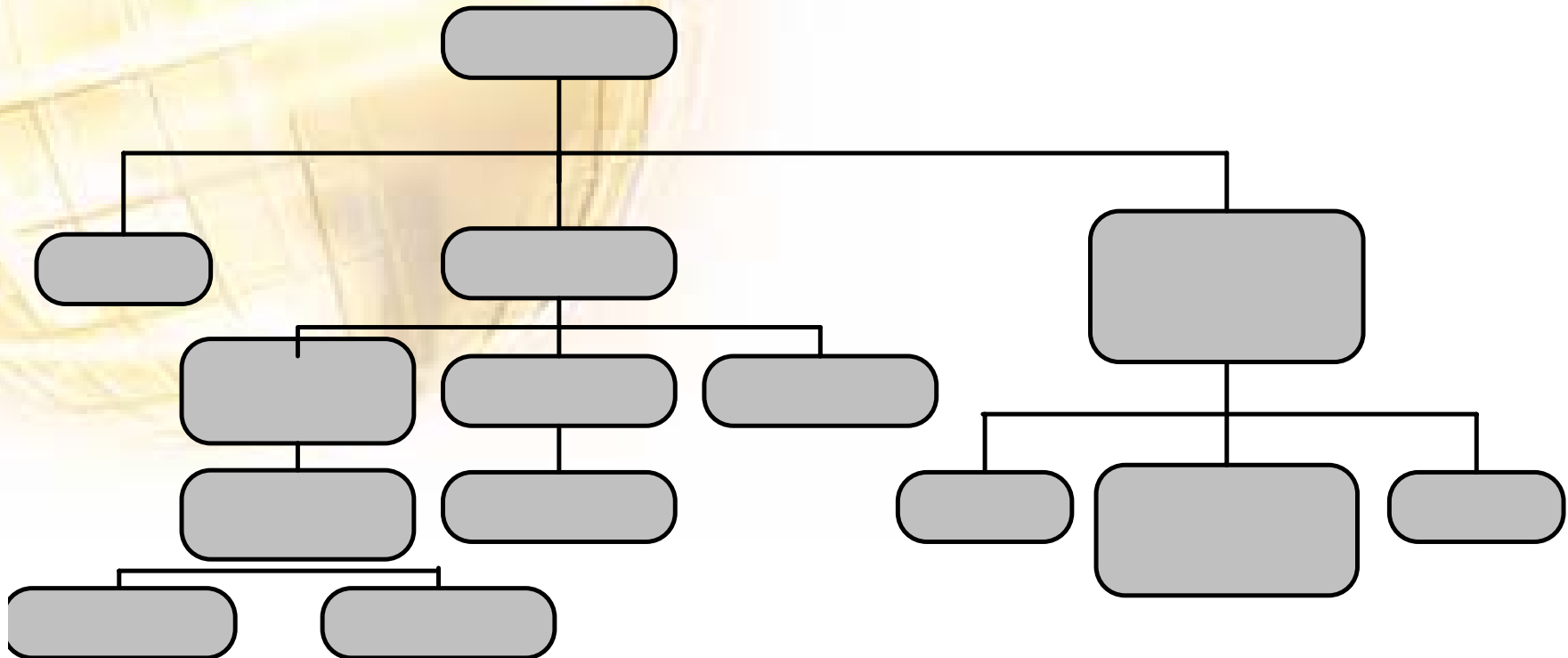
Introduction

- Knowledge based economy.
- Need for synergizm between '*academic-science*' and '*corporate-science*'.
- Unmarketability of university researches.
- Highly potential entrepreneur from university graduates and alumny.

Missing Links



Organization Chart



Technology Transfer Office

- ITB have three instrument that act as TTO which is :
 - Institute of Research And Community Empowerment
 - ITB Business Incubator Center
 - Intellectual Property Right Office

Intellectual Property Management Office

- **Vision : Being the foremost technology and intellectual property licensing office in the world**
- **Mission : Actively involved in knowledge based national economic development through encouraging the inventive culture, protecting and selling intellectual property work which have been invented both inside and outside ITB, and conducting other effort with the aim of delivering extensive benefit for public.**

Intellectual Property Management Office

- 75 patent application and 1 trade secret
- Have been granted 8 patent
- Have been licensed 3 technologies
 - Probiotic microbe technology and Its application in agriculture, plantation, animal husbandry, and organic waste processing
 - Technology and production process of gas desulfurisation absorbent.
 - Coal up-grading process

ITB Business Incubator Center

- ***ITB Business Incubator Center (ITB BIC) founded to facilitate the process creation of new commercial venture, mainly related with ITB's competency.***
- ***The mission of ITB Business Incubator Center is to create entrepreneurs and enterprises by providing assistance and facilities services, needed by a potential entrepreneur.***

GOALS

- 1. Encourage the process of establishing new enterprises based on various competency.**
- 2. Promote emergence of new knowledge, technological innovation and entrepreneurship.**
- 3. Create institutionalized networking for industries, private sectors, and entrepreneurs**
- 4. Promote new invention which will contribute to the growth of institution and industry.**

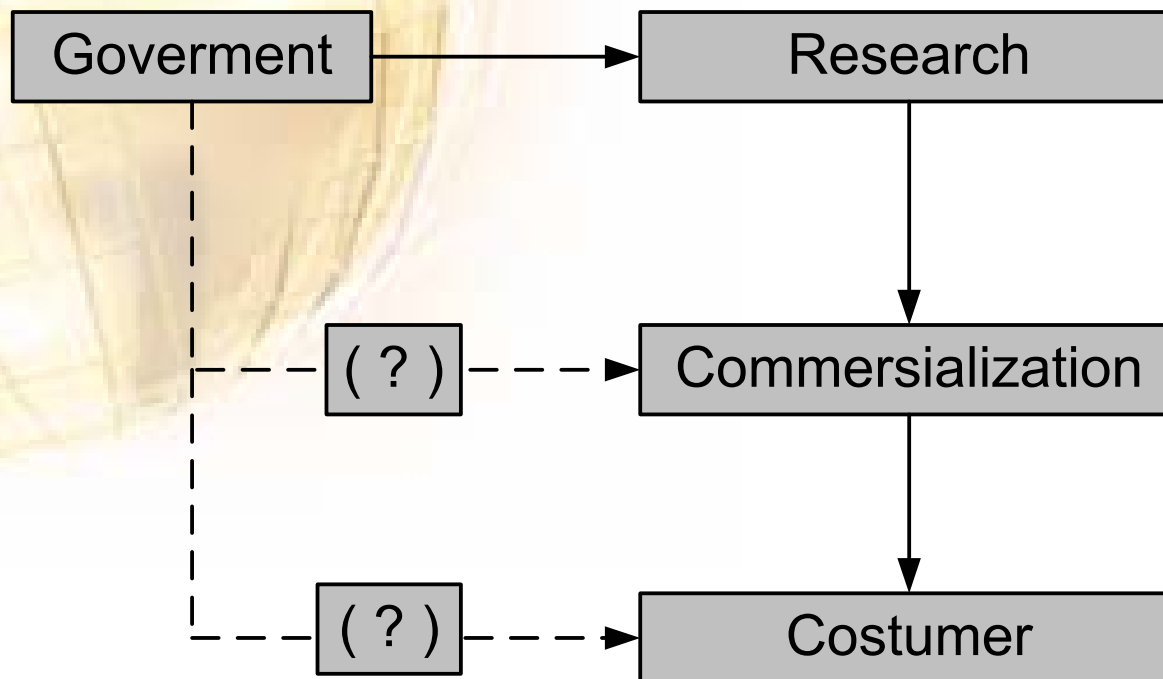
ITB BIC's TENANTS

- **Cipta Tani Lestari (CTL)**, agricultural and farming tools production: Biogas Plastic Reactor, Manure
- **Gears of Indonesia (Gol)**, general manufacture and Mechatronic: Machinery components
- **Lorco Interactive (LOI)**, Interactive CD: Design, Community, Tutoring Tools.
- **Fermentech Mikro Lacta (FML)**, healthy and fermented drink
- **Ganesha Engineering Mitra Abadi (GEMA)**, design and maintenance factory pipes
- **Rumah Herba**, Traditional Healthy Fresh Juice.
- **Tecnicore Nusa Cipta**, hardware for Software Protection (Dongle): Gembox Management Software.
- **Great**, Reverse Engineering And Tool Making.
- **Clarisense Digital Media**, telecommunication, multimedia

IED Function On Tech. Transfer

- **Start Up Enterprises Empowerment**
- **Extend Capacity for Start Up Enterprises**
- **Meeting Platform between Start Up Enterprises & Inventor**
- **Academic-Industry joint Research Projects.**

Government Support



Government Support

- **Government have given financial support to research program.**
- **Low support to commersialization research.**
- **Low support to encourage consumer for using product from research.**



Key Success Factor Start Up Enterprises

- Market driven ideas
- Management skills
- Access to capital



Thank You